



gutters, downspouts & accessories

Choose from a variety of sizes, shapes, colors, and decorative options when selecting your gutter components, with the assurance that each gutter, downspout, and accessory has been handpicked as part of the Wilco line of dependable, hard-working, and well-crafted products.

gutters, downspouts
& accessories

317.781.5464 www.wilcosupply.net





a. WEDGES
b. EXPANSION JOINTS

USES:

Wedges eliminate difficult installation and adapt to virtually any degree of slope. Used when fascia board is slanted and eliminate the need to nail directly into the roof.

Expansion Joints allow gutter the needed space to expand and contract while accommodating changes in temperature. Recommended for use with long runs of gutter (rule of thumb: each 10-foot increment of gutter needs approximately 1/64th of an inch to contract or expand as the temperature changes +/- 10 degrees).

FEATURES:

Wedges: Available in low-gloss white

Expansion Joints: Available in mill finish with an expandable rubber boot at the center

over for specifications



**WEDGES
EXPANSION JOINTS**

SIZES:

Wedges: 5 inch (100 pcs/carton) and 6 inch (50 pcs/carton)

Expansion Joints: 5 inch and 6 inch (12 pcs/carton)

317.781.5464 www.wilcosupply.net





PLAIN CONDUCTOR HEADS

USES

Used as a holding valve that catches and directs water through a scupper (tube that channels water from the roof, through a wall, and down the side of a structure) to the downspout.

FEATURES

Available in a wide range of colors and custom made to your specifications.



over for specifications

PLAIN CONDUCTOR HEADS

SIZES:

3 inch (packaged individually)

4 inch (packaged individually)

317.781.5464 **www.wilcosupply.net**





a. FUNNELS
b. DIVERTERS

USES:

Funnels direct water from multiple downspouts into one.

Diverters turn one water source into two, allowing the user to direct water in multiple directions (e.g. into a rain barrel, trough, away from landscaping, etc.)

FEATURES:

Funnels and Diverters: Available in low-gloss white and royal brown



over for specifications

FUNNELS AND DIVERTERS

SIZES:

Funnels and Diverters: 3 inch and 4 inch
(packaged individually)

317.781.5464 **www.wilcosupply.net**





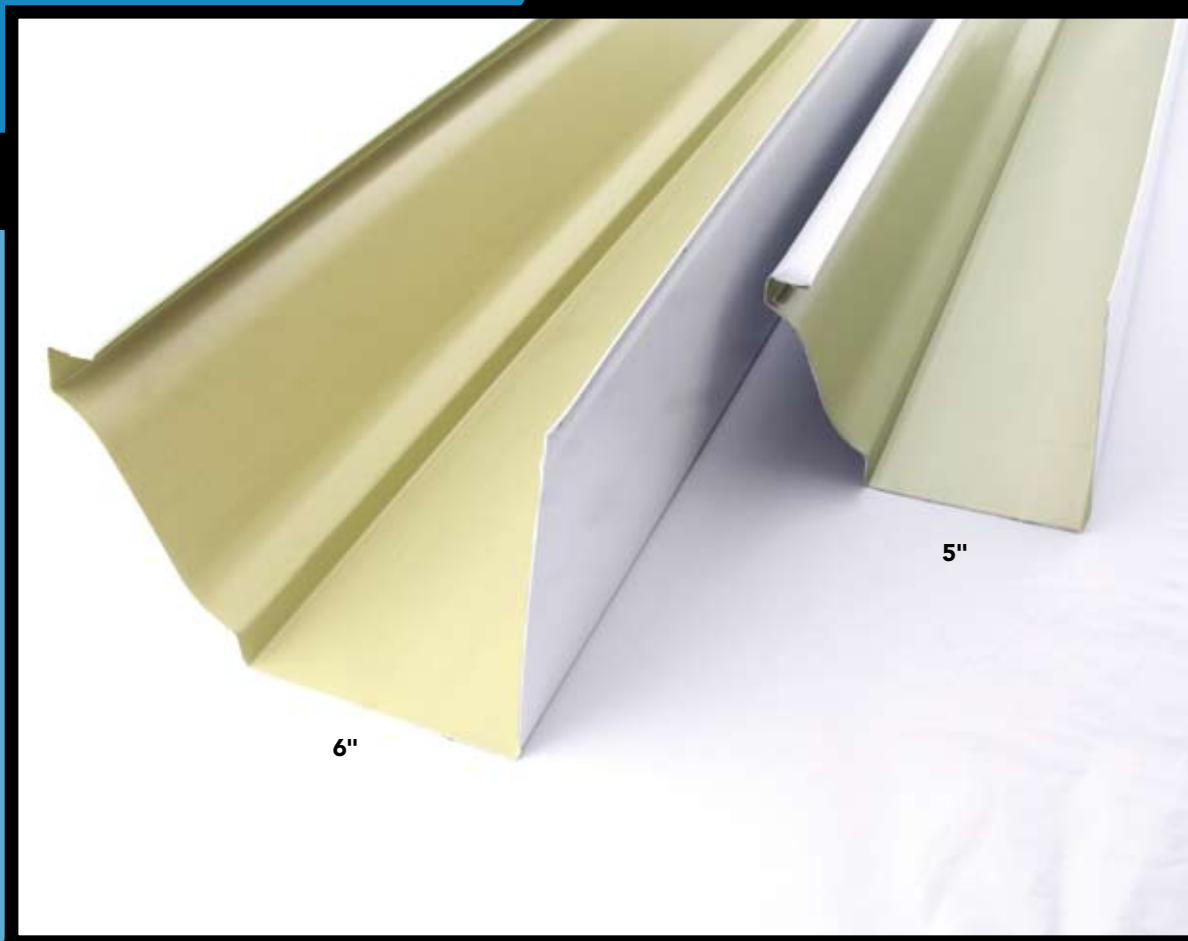
GUTTER

USES:

Installed at the bottom edge of a building's roof slope to collect water and channel it away from and down a structure (via downspouts).

FEATURES:

Available in .027 gauge aluminum, 21 colors, 10-foot, 20-foot, and custom lengths.



over for specifications

GUTTER

SIZES:

5 inch (10 pcs/carton)

6 inch (10 pcs/carton)

317.781.5464

www.wilcosupply.net





END CAPS

USES:

Installed at the left and right ends of gutter to give a finished look and to encourage water to flow into downspouts rather than off the edges of the roofline.

FEATURES:

Made from .19 gauge aluminum and available in all colors. Wilco has its own end caps made to provide perfect color matches and to avoid common metal cracks in the bottom corners that can lead to warranty issues.



over for specifications

END CAPS

SIZES:

5 inch (25 left and 25 right/box)

6 inch (25 left and 25 right/box)

317.781.5464

www.wilcosupply.net





a. SPLASH BLOCK
b. DOWNSPOUT EXTENSION

USES:

Splash Block catches water from downspouts and disperses it from the home, preventing erosion to landscaping.

Downspout Extension also diverts water away from the home's foundation.

FEATURES:

Splash Block: Available in green PVC. As a rule, PVC is more durable, will not crack with weather changes, and is easier to move around.

Downspout Extension: Main benefit is its flexibility, extending from 25-55 inches, interlocking for extra length, and durable enough to bend, extend, and bury. Available in green corrugated polyethylene.



over for specifications

**SPLASH BLOCK
DOWNSPOUT EXTENSION**

SIZES:

PVC Splash Block: one size (packaged 10 pcs/carton)

Downspout Extension: one size (packaged individually)

317.781.5464 **www.wilcosupply.net**





- a. 3" x 4" OVAL OUTLET
- b. 3" x 4" RECTANGLE OUTLET
- c. 2" x 3" RECTANGLE OUTLET
- d. 2 3/8" ROUND OUTLET
- e. 2 3/4" ROUND OUTLET

USES:

Connects gutter to downspout.

FEATURES:

Large upper flange allows for easy installation to inside of the gutter and tapered end fits snugly in downspout. May screw in place or pop rivet. Caulking is not required nor recommended and may cause a small dam-like area in the gutter that collects debris.



over for specifications

3" x 4" OVAL OUTLET
3" x 4" RECTANGLE OUTLET
2" x 3" RECTANGLE OUTLET
2 3/8" ROUND OUTLET
2 3/4" ROUND OUTLET

SIZES:

3" x 4" OVAL OUTLET (50 pcs/carton)
3" x 4" RECTANGLE OUTLET (50 pcs/carton)
2" x 3" RECTANGLE OUTLET (100 pcs/carton)
2 3/8" ROUND OUTLET (250 pcs/carton)
2 3/4" ROUND OUTLET (250 pcs/carton)

317.781.5464 **www.wilcosupply.net**





- 2" x 3" A-STYLE ELBOW
- 3" x 4" A-STYLE ELBOW
- 2" x 3" B-STYLE ELBOW
- 3" x 4" B-STYLE ELBOW
- 2" x 3" A OFFSET
- 3" x 4" A OFFSET
- 2" x 3" B OFFSET
- 3" x 4" B OFFSET

USES:

Create an extension from the downspout either straight back to the wall as you look at the downspout (A-style) or to the left or right of the downspout (B-style).

FEATURES:

Elbows: Wilco elbows are longer than many other elbows to prevent downspouts from becoming clogged with debris and are made of thicker gauge aluminum to prevent metal from cracking.

Offsets: Short, 35-degree offsets are perfect for brick ledges, short overhangs, ledges over decks, etc.

over for specifications



Wilco Elbows and Offsets are side-crimped, making it possible to conceal cross-overs under the soffit and avoid unsightly dimples.

2" x 3" A-STYLE ELBOW

3" x 4" A-STYLE ELBOW

2" x 3" B-STYLE ELBOW

3" x 4" B-STYLE ELBOW

2" x 3" A OFFSET

3" x 4" A OFFSET

2" x 3" B OFFSET

3" x 4" B OFFSET

SIZES:

2" x 3" A-STYLE ELBOW and 2" x 3" B-STYLE ELBOW
(30pcs/carton)

3" x 4" A-STYLE ELBOW and 3" x 4" B-STYLE ELBOW
(20pcs/carton)

2" x 3" A OFFSET and 2" x 3" B OFFSET
(40pcs/carton)

3" x 4" A OFFSET and 3" x 4" B OFFSET
(20pcs/carton)

317.781.5464

www.wilcosupply.net





- a. DOWNSPOUT STRAPS/
PIPE BANDS
- b. PIPE CLETES

USES:

Used to secure downspout to wall.

FEATURES:

Downspout Straps: Custom made from our coil stock for a perfect color match. Available for use on 3- or 4-inch downspouts with markings for easy 90-degree bends. Clean professional look.

Cletes: No attachment on the front of the downspout gives a streamlined appearance and makes for easy installation. Available in low gloss white for 3- and 4-inch downspouts.



over for specifications

**DOWNSPOUT STRAPS
CLETES**

SIZES:

Downspout Straps (100 pcs/carton)

Cletes (50 pcs/carton)

317.781.5464 **www.wilcosupply.net**





2" x 3" DOWNSPOUT
3" x 4" DOWNSPOUT

USES:

A vertical pipe that carries water from the gutter to the ground.

FEATURES:

Our .019 gauge aluminum downspout is available in 8-foot sections (select colors) and 10-foot sections (all colors). These true rectangular downspouts with corner crimping are inspected for tight seams, straightness, and absence of dents and marks.

over for specifications



Less expensive product is almost always thinner gauge aluminum, which can mean inconsistent shape, denting and splitting.

2" x 3" DOWNSPOUT
3" x 4" DOWNSPOUT

SIZES:

Downspouts: 2" x 3" and 3" x 4" (10pcs/carton)

317.781.5464 www.wilcosupply.net





a. TILE ADAPTERS
b. OUTLET STRAINERS

USES:

Tile Adapters attach to downspout and allow you to install downspouts into 4-inch black drainage tiles.

Outlet Strainers are used to capture debris and prevent it from traveling down into and clogging downspouts.

FEATURES:

Tile Adapters: Designed for 3- and 4-inch downspouts and a clean, professional look.

Outlet Strainers: Aluminum strainer is designed for 3- and 4-inch downspouts and is much easier to clean than removing downspouts.



over for specifications

**TILE ADAPTERS
OUTLET STRAINERS**

SIZES:

Downspout Strainer: 3" x 4" (50 pcs/carton)

Outlet Strainer: 2" x 3" (50 pcs/carton)

Tile Adapter: 2" x 3" x 4" (25 pcs/carton)

Tile Adapter: 3" x 4" x 4" (25 pcs/carton)

317.781.5464 www.wilcosupply.net





- a. STRIP MITRES
- b. BAY MITRES

USES:

Strip Mitres create turns inside or outside 90-degree corners.

Bay Mitres used for bay windows or any corner that is less than or greater than 90 degrees.

FEATURES:

Made from O temper metal that allows for conformation to fit slight variations in gutters, seamless, one-piece construction, and less leaks. Designed for homes that do not have true 90-degree angles or I/S or O/S corners. Strip Mitres available in most colors and Bay Mitres available in low gloss white only.



over for specifications

STRIP MITRES
BAY MITRES

SIZES:

Strip Mitres: 5 inch/6 inch (20 pcs/carton)

Bay Mitres: 5 inch/6 inch (20 pcs/carton)

317.781.5464 **www.wilcosupply.net**





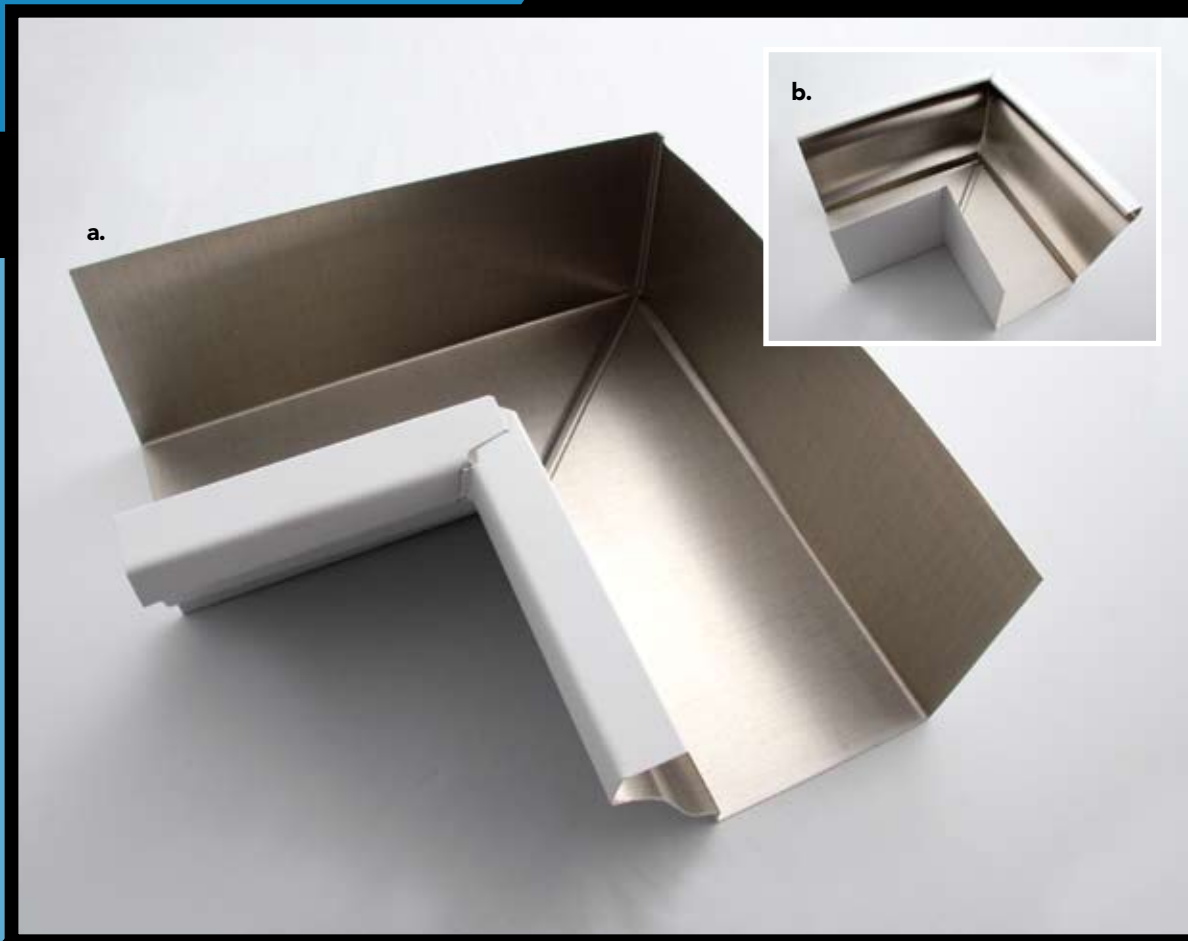
- a. **INSIDE BOX MITRE**
- b. **OUTSIDE BOX MITRE**

USES:

Create inside and outside turns in the guttering system.

FEATURES:

Made from our .019 gauge aluminum for the perfect color match, tighter seams, and less chance of leakage due to expansion and contraction. Available in all colors.



over for specifications

INSIDE BOX MITRE
OUTSIDE BOX MITRE

SIZES:

Inside and Outside Mitres: 5 inch (20 pcs/carton)

Inside and Outside Mitres: 6 inch (20 pcs/carton)

317.781.5464 **www.wilcosupply.net**

